

Project No: 2020-1-EL01-KA201-079157

Intellectual Output

O4: Website with the Public Database of Geoparks

Partner: PANEPISTIMIO PATRON (E10209090, GR)



Erasmus+



Project information

Project acronym: G4ViD
Project title: Geology for the Blind and the Visually Impaired
Agreement number: 2020-1-EL01-KA201-079157
EU programme: Erasmus+
Project website: <http://www.g4vid.eu/>

Prepared by

Partner Organisation: PANEPISTIMIO PATRON (E10209090, GR)

© G4ViD – Geology for the Blind and the Visually Impaired

Disclaimer:

The European Commission support for the production of this publication does not constitute an endorsement of the contents which reflects the views only of the authors, and the Commission cannot be held responsible for any use which may be made of the information contained therein.



Table of Contents

1. Introduction

1.1 About this Intellectual Output

2 Geoparks and geosites

2.1 Geoparks for which data was collected

2.2 Geosite inventories

2.3 Geopark maps

2.4 Geopark original photos from the consortium

3. App repository

3.1 App information

3.2 App download via Google store

3.3 Manual app download



1. Introduction

1.1 About this Intellectual Output

The final intellectual output of the project concerns the website created that includes the information gathered in the previous intellectual outputs. In detail, the website contains the following:

- The geosites database created in output 1 as well as photo galleries of all visited geosites.
- Detailed information and ability to download the software produced in the previous intellectual outputs.

2 Geoparks and geosites

2.1 Geoparks for which data was collected

The data that appears in the database concerns the following geoparks.

LESVOS ISLAND UNESCO GLOBAL GEOPARK (GREECE)

The Lesvos Island UNESCO Global Geopark, former Lesvos Petrified Forest Geopark, is a founding member of the Geoparks Network that brings visitors to an ancient forest preserved by a massive volcanic eruption 20 million years ago.

TROODOS UNESCO GLOBAL GEOPARK (CYPRUS)

The mountainous Troodos UNESCO Global Geopark area is in the central part of the island with its highest peak, Olympos, at 1952 m and 57 km from the capital, Lefkosia. The mountains are covered by natural forests and agricultural fields, vineyards and orchards. The uplift of the ophiolite fragmented its rocks, with radial drainage patterns creating varied and impressive landscapes.



TUSCAN MINING PARK UNESCO GLOBAL GEOPARK (ITALY)

The Tuscan Mining Park UNESCO Global Geopark is located in the northern Province of Grosseto in Tuscany, central Italy. The territory of the Colline Metallifere (Metalliferous Hills), stretches between the provinces of Grosseto and Livorno in Tuscany, a predominantly hilly area, covered by extensive forested areas over an area of 1087 km².

SIERRA NORTE DE SEVILLA UNESCO GLOBAL GEOPARK (SPAIN)

The Sierra Norte de Sevilla UNESCO Global Geopark is located in the central region of western Sierra Morena, a mountain range in southern Spain, which separates the Central Plateau and the Andalusia Depression. The Geopark is situated in the north of Seville province, respectively flanked, to the west by the “Sierra de Aracena y Picos de Aroche” Natural Park, and to the east by “Hornachuelos” Natural Park.

2.2 Geosite inventories

For each geosite belonging to a geopark, the following info is displayed:

- GEOSITE CODE/ NAME
- GEOSITE LOCATION
- GEOGRAPHICAL
- COORDINATIONS
- ALTITUDE
- LENGTH
- GEOSITE CATEGORY
- ACCESSIBILITY
- GEOSITE USE
- GEOSITE DESCRIPTION



- PHOTOGRAPH

A sample of a geosite inventory sheet appears below:

GEOSITE INVENTORY SHEET

GEOSITE CODE/ NAME: 01 / Petrified Forest Park at Bali Alonia

FOSSIL SITE: 15 Sequoia Petrified tree trunk

GEOGRAPHICAL DATA

GEOSITE LOCATION	Bali Alonia petrified forest park, Western Lesvos
GEOGRAPHICAL COORDINATIONS	X: 39.208723 Y: 25.898484
ALTITUDE	240
HEIGHT	3.10m
CIRCUMFERENCE	5.30m

GEOSITE CATEGORY: Paleontological geosite

DESIGNATION: Core zone of the petrified forest - Located within the NATURA 2000 protected area SCI "Western peninsula-Petrified Forest" - Global interest

ACCESSIBILITY: Excellent (Access to the Park by bus, car, etc. Access to the fossil site through cobblestone path)

GEOSITE USE: Educational and Tourist use

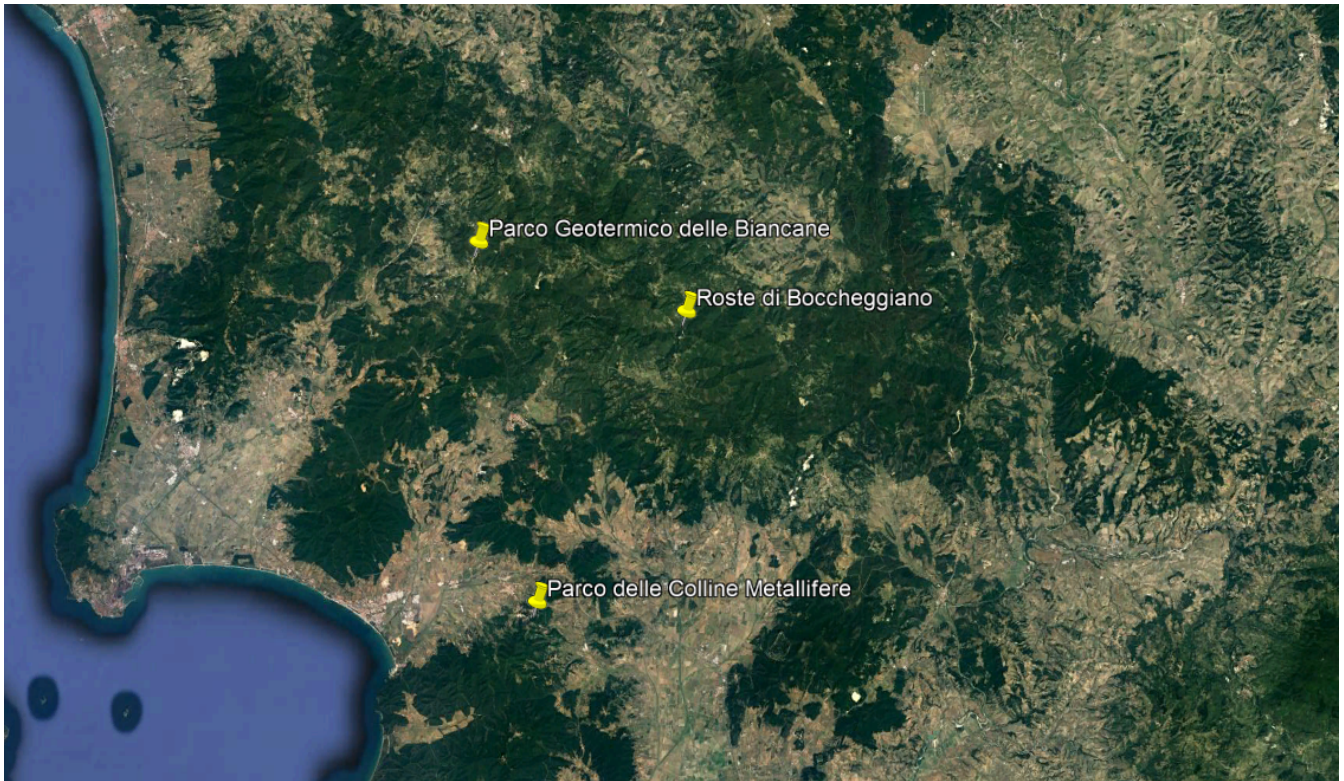
GEOSITE DESCRIPTION

A characteristic petrified trunk of a Sequoia tree in the Petrified Forest Park lying in its original position.
This large standing petrified conifer trunk with 3.10 meters height and 5.30 meters circumference, belongs to the Taxodiaceae family.
Prior to petrification it is likely that this tree was over 100 meters high. A large lengthwise crack in the lower trunk has undergone restoration with mortar and coloring agents to stabilize the fossil.

2.3 Geopark maps

Maps of the most important geosites are available in the corresponding section. In detail:

Tuscany geosites



Lesvos geosites



Sevilla geosites



Latvia geosites



2.4 Geopark original photos from the consortium

A significant number of original photos were taken during the visits to the geoparks. After careful selection by geologists and strict criteria including photo quality, the galleries are available on the website in order to enrich the public knowledge of these geoparks.

Tuscany Gallery







Sevilla Gallery





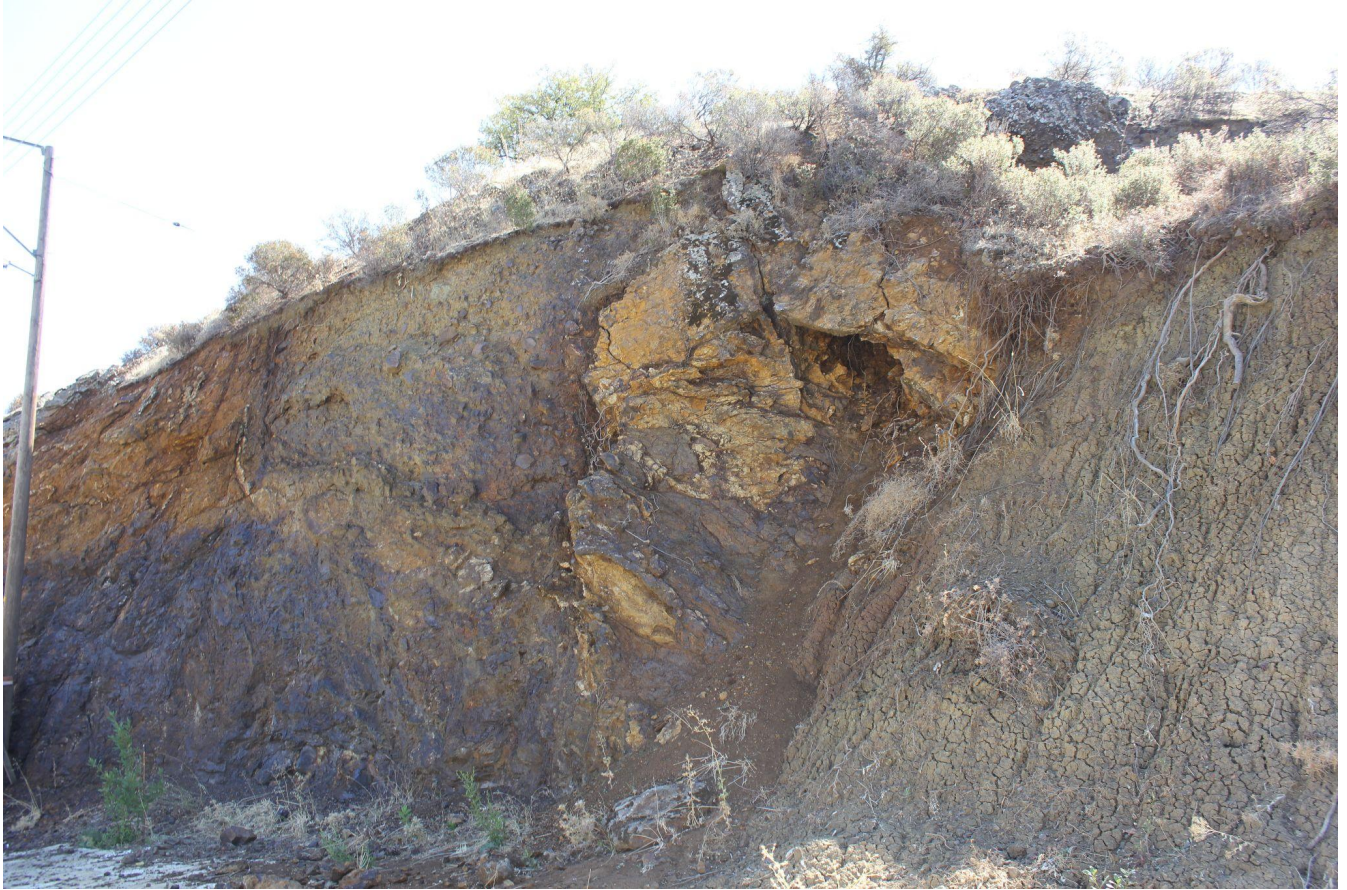








Cyprus gallery







3. App repository

3.1 App information

App information is listed for visitors of the website. In detail:

The application is built for Android operating systems. The interface is user friendly and consists of simple touch commands and vibration feedback. All screens are voice-assisted for the visually impaired whilst they also depict real images so that they can be used by users with no or little visual impairment. When initially launched, the application presents a voice-guided image selection screen. The user needs only to touch the right image which will be translated to sound. The application also includes a training feature. The public can download the latest version from the Google play store as or manually.



3.2 App download via Google store

The app is available to be downloaded via the Google store. The appropriate link is displayed on the website.

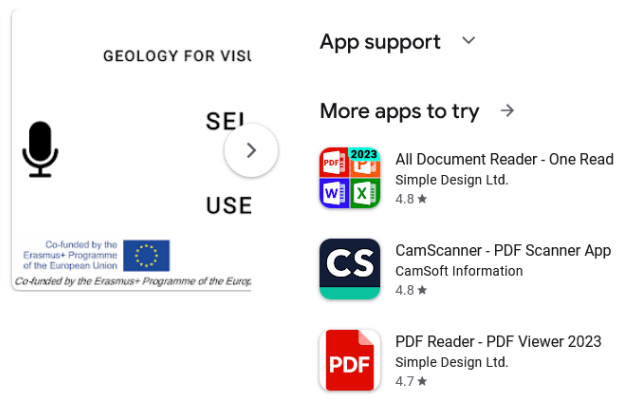
G4ViD

Applied Electronics Laboratory

10+ Downloads | Everyone

Install on more devices | Share

This app is available for your device



3.3 Manual app download

For devices with no google store or for future-proof reasons that the application get unlisted from the store, a manual download option exists which links to the installer (.apk file) for direct download from the website.